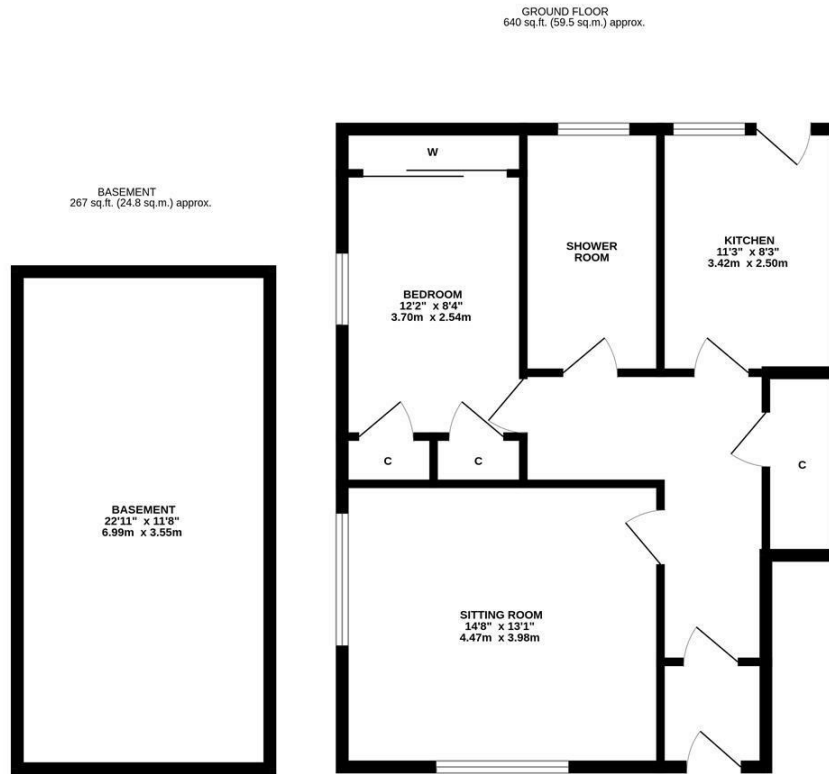




With a generous, fully tanked basement and situated close to Newcastle City Centre, this one bedroom ground floor flat is ideally located on South View West, Heaton. South View West, a stones-throw from the shops and amenities on both Heaton Park Road and Heaton Road and within walking distance from the delightful Heaton Park.

The accommodation briefly comprises: entrance lobby through to entrance hall with storage cupboard; sitting room with dual aspect windows; kitchen with fitted units, work surfaces and rear door access to the yard; shower room with three piece suite and trap door access and stairs to the basement; double bedroom with fitted storage cupboards; the basement measures almost 23ft and is fully tanked providing excellent storage and could be converted a fully functioning room (subject to necessary works). Externally, a pretty front garden laid mainly to lawn with a mixture of mature planting including flowers and trees and to the rear and side an enclosed yard and patio area with double gated access or providing off-street parking if required.

Ground Floor Flat | 907 Sq ft 84.2m² (including basement) | One Bedroom | Sitting Room | Kitchen | Shower Room | Basement | Front Garden | Side & Rear Patio & Yard | Leasehold - 99 Years Remaining | Service Charge £761.40 | Council Tax Band A | EPC: Rating C



Offers Over £140,000

IMPORTANT NOTE: These particulars and the descriptions and measurements herein do not constitute representation and whilst every effort has been made to ensure accuracy, this cannot be guaranteed.

